

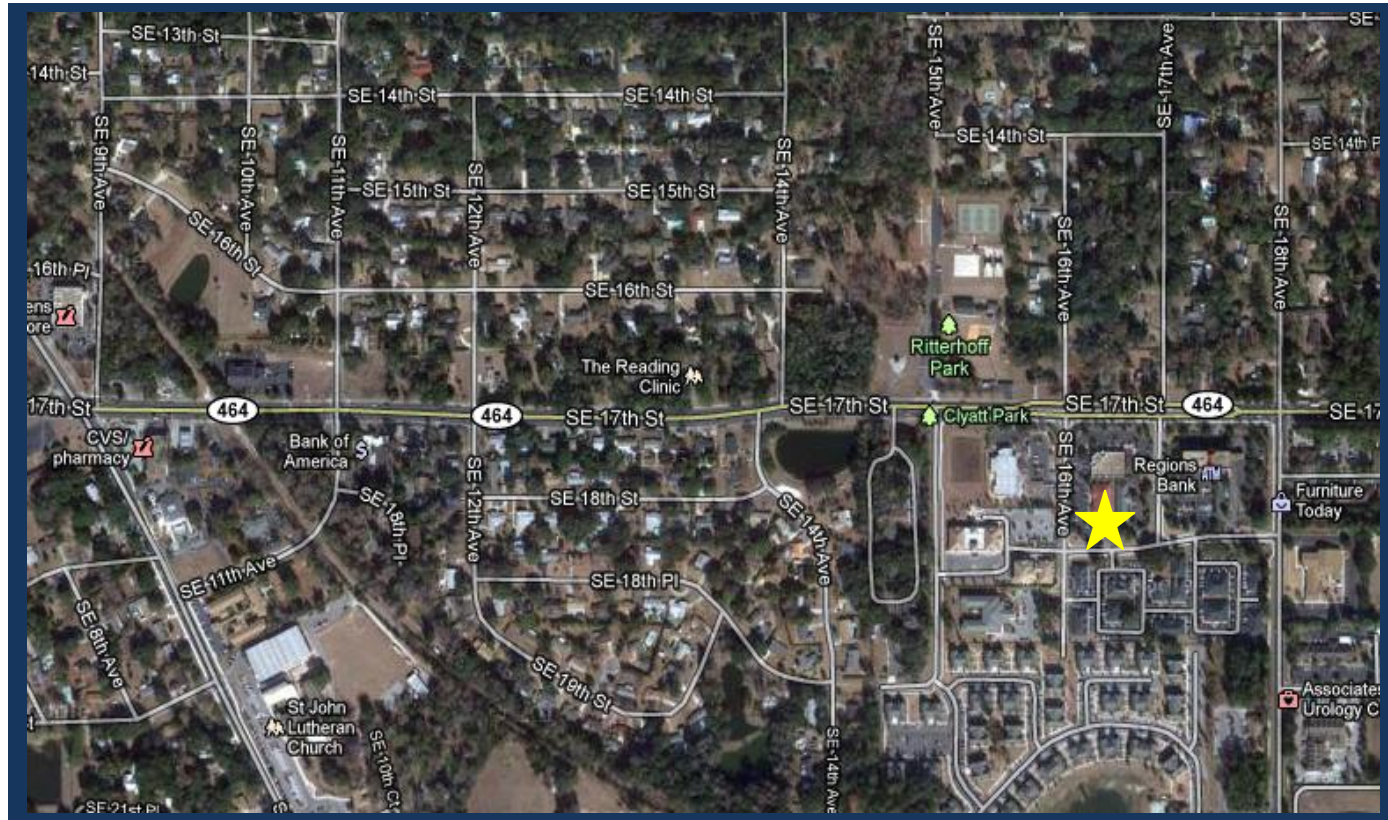
Demographics for Deerwood Professional Park

	1 Mile	3 Miles	5 Miles
2009 Total Daytime Population	9,927	66,559	125,890

2010 Traffic Count

SE 17th Street **33,500**

SE 18th Avenue **8,700**



Act Now! Motivated Owner offers Lease, Lease Option and Owner Finance. Call Today!

Lori Busch
(352)690-1909
ljbusch@ocalaproperty.net



3300 SE 3rd Ave
Ocala, FL 34471
OcalaProperty.com

Deerwood Professional Park

Ocala's Premier Location for your Corporate Office

Sale or Lease
2200 to 16,532 SF

Motivated Owner
Offers Exceptional
Opportunities

Physicians Offices,
Therapy, Rehabilitation
Call Centers, Insurance,
Financial, Legal, Sales
Offices, Senior Services,
Government Agencies



**For a no Obligation
Preview of these fine
properties call:**



Lori J. Busch
Busch Realty
Phone: (352) 690-1909
<http://OcalaProperty.com>

Professional Office Buildings for Sale or Lease



1720 SE 16th Ave Bldg 300

- 5,075 to 16,532 SF
- Built in 2010
- Office Park Zoned

Lease:	5075 SF	\$5,920
	6382 SF	\$7,445
	16,532 SF	\$19,285
\$14 PSF NNN		
Shell:	5075 SF	\$700,350
	6382 SF	\$880,716
	16,532 SF	\$2,281,416
Ready Now:	5075 SF	\$954,100
	6382 SF	\$1,199,816
	16,532 SF	\$3,108,016



1805 SE 16th Ave Bldg 1100 Unit 3

- 2240 SF
- Built in 2007
- Office Park Zoned

Lease: \$2,613
Shell: \$414,000
Ready Now: \$495,000



1805 SE 16th Ave Bldg 900

- 3,750 SF
- Built in 2007
- Office Park Zoned
- Individual Office Rooms
- Suites with shared reception and conference room

Lease: \$500/mo
Ready Now \$799,000



1805 SE 16th Ave Bldg 1000

- 1461 to 6080 SF Available
- Built in 2007
- Office Park Zoned
- Former Orthopedic Center

Lease: 1461 SF ~~\$1,705/mo~~ **LEASED**
 4280 SF \$5,000/mo \$14 PSF

Ready Now: 1800 SF \$369,000
 4280 SF \$877,400
 6080 SF \$1,246,400

*Interior To Suit
 Versatile Floor
 Plans*



1805 SE 16th Ave Bldg 400

- 3,600 SF
- Built in 2006
- Office Park Zoned
- Medical Office with X-Ray

Ready Now: \$785,000 PSF: \$218
 Presently leased until 12/21/2011

*Finished Interiors
 Turnkey Ready
 for your Firm*

