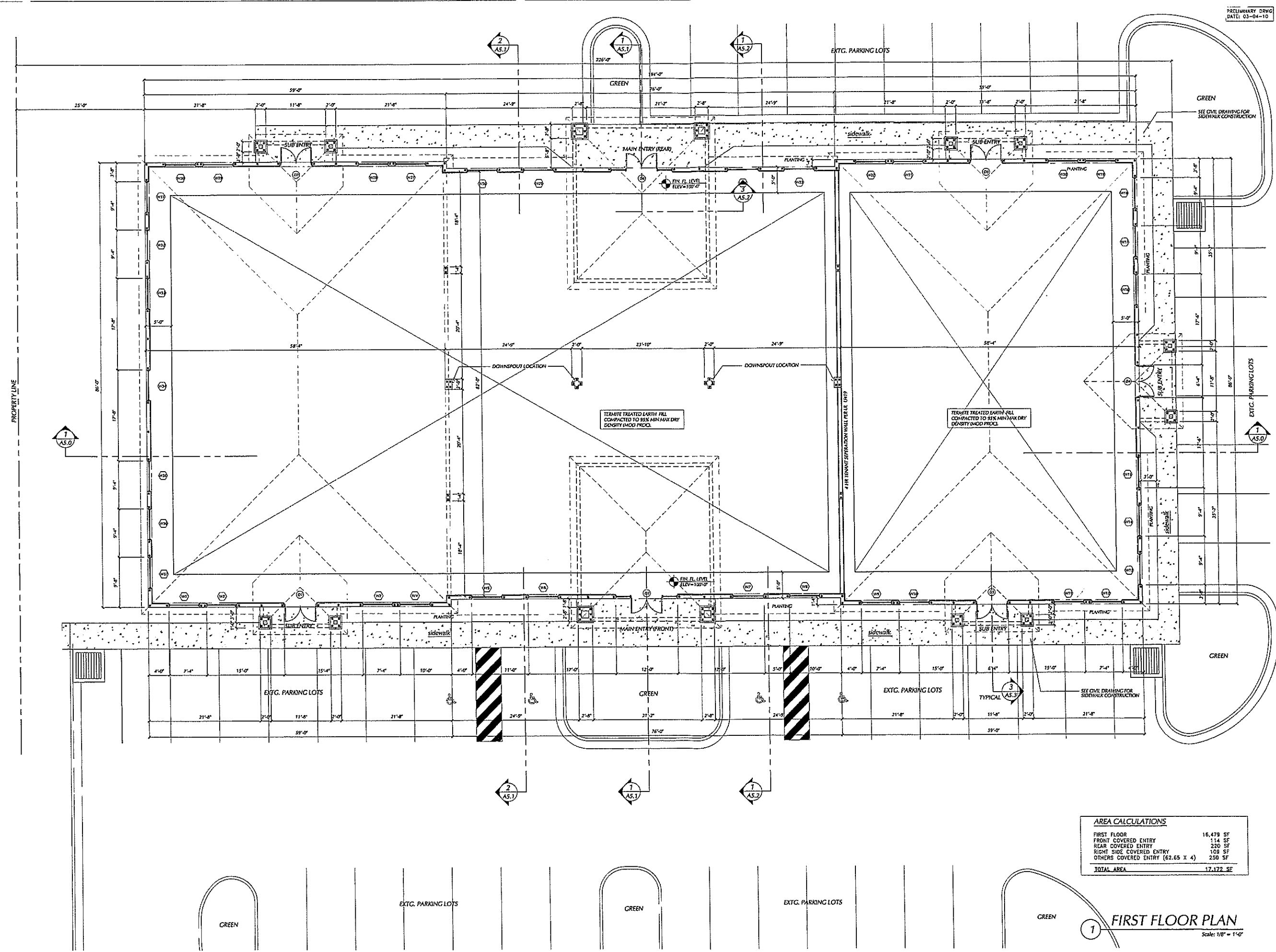


PRELIMINARY DRWG
DATE: 03-04-10

DRAWING ISSUE:
DATE: DATE
REVISED:



AREA CALCULATIONS

FIRST FLOOR	16,479 SF
FRONT COVERED ENTRY	114 SF
REAR COVERED ENTRY	220 SF
RIGHT SIDE COVERED ENTRY	108 SF
OTHERS COVERED ENTRY (62.65 X 4)	250 SF
TOTAL AREA	17,172 SF

FIRST FLOOR PLAN
Scale: 1/8" = 1'-0"

GENERAL CONTRACTOR

David P. King, Jr
ARCHITECT
7500 SW 61ST AVE
SUITE 400
OCALA, FL 34478
352.673.3737 (PH)
352.673.6737 (FAX)

REGISTRATIONS:
STATE OF FLORIDA AR 12,959
STATE OF GEORGIA 5044

A NEW
OFFICE BUILDING - 300

FOR
FOX PROPERTIES

MARION COUNTY, FL.

DRAWN BY: RBC

CHECKED BY:

APPROVED BY: DPK

ARCHITECT'S PROJECT No.:
10-5080

SHEET TITLE:
FIRST FLOOR PLAN

SHEET NUMBER

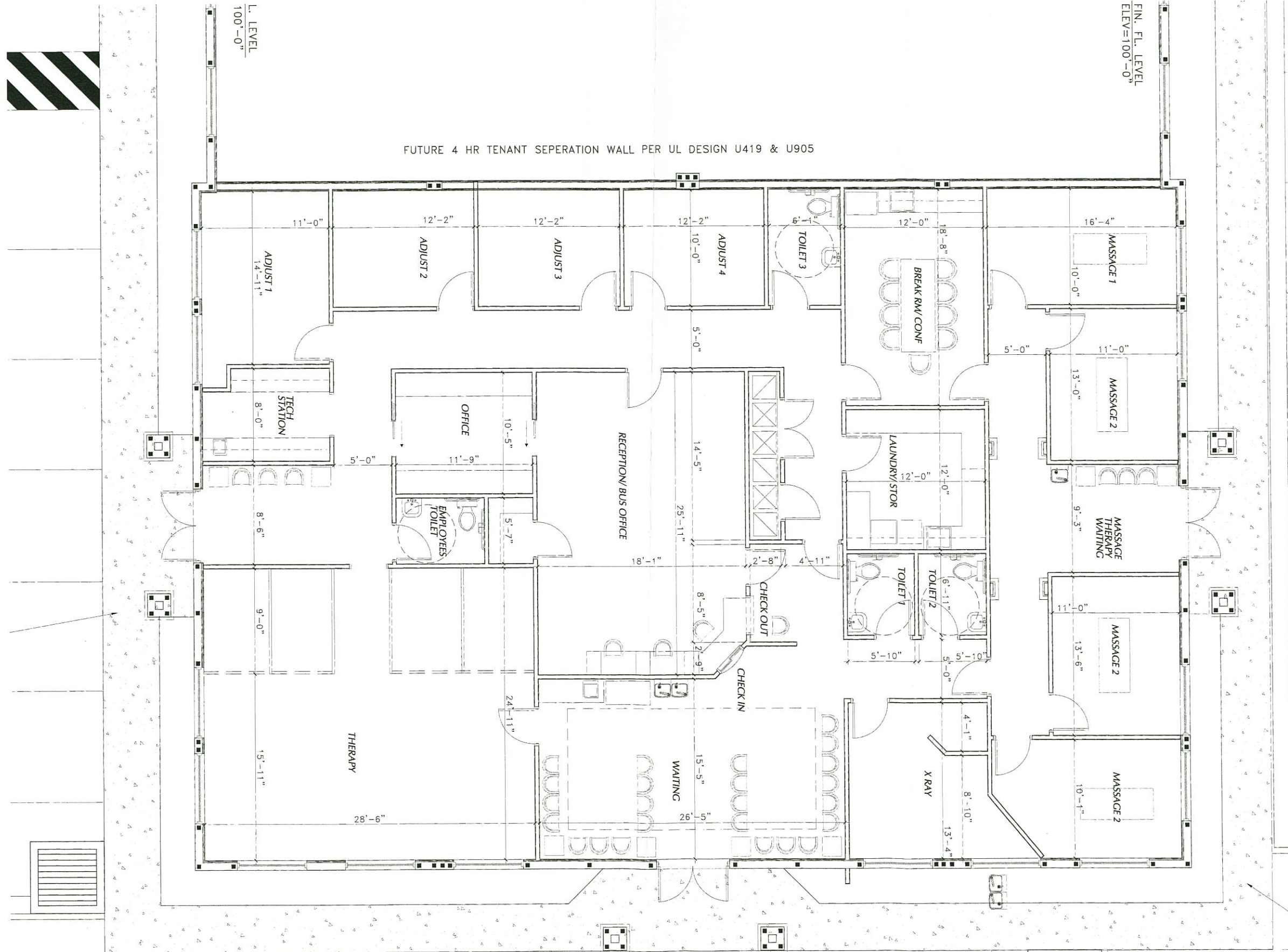
A1.0

BIDD 300

FIN. FL. LEVEL
ELEV=100'-0"

FUTURE 4 HR TENANT SEPERATION WALL PER UL DESIGN U419 & U905

L. LEVEL
100'-0"



BID 300

David P. King, Jr
ARCHITECT
7500 SW 61ST AVE
SUITE 400
OCALA, FL 34476
352.873.3737 (PH)
352.873.0737 (FAX)

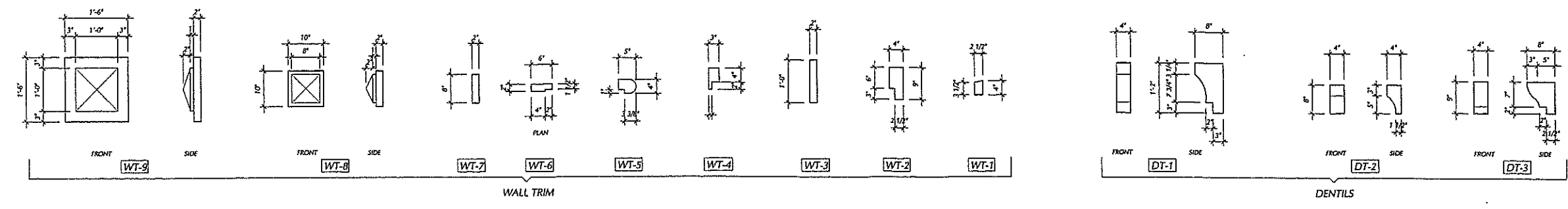
REGISTRATIONS:
STATE OF FLORIDA AR 12,889
STATE OF GEORGIA 5044
PROJECT

A NEW
OFFICE BUILDING
FOR
FOX PROPERTIES

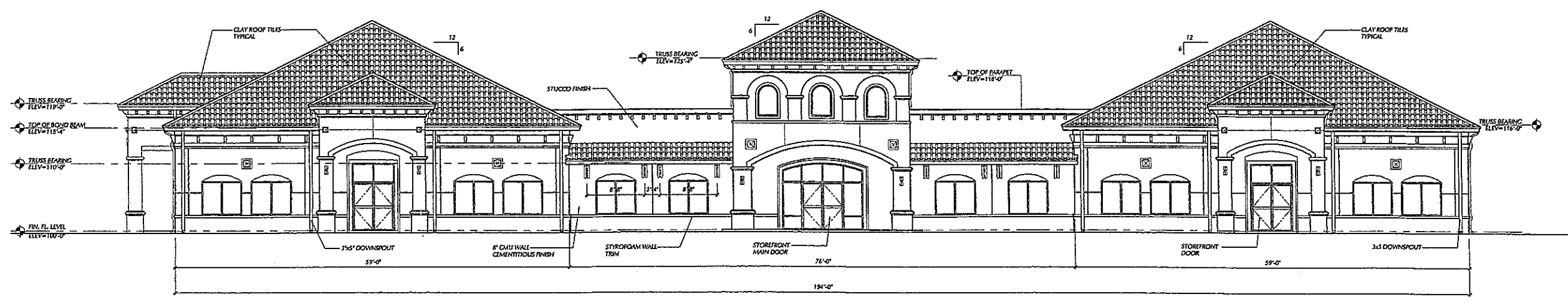
MARION COUNTY, FL.
DRAWN BY: RBC
CHECKED BY:
APPROVED BY: DPK
ARCHITECT'S PROJECT No.:
10-5080

SHEET TITLE:
**FRONT ELEVATION
REAR ELEVATION**

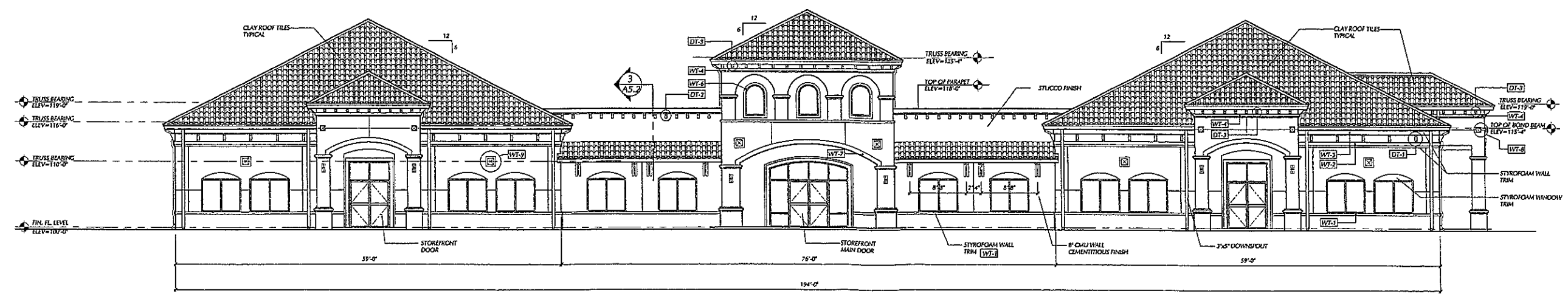
SHEET NUMBER



3 ARCHITECTURAL STYROFOAM DETAIL
Scale: 3/4" = 1'-0"



2 REAR ELEVATION
Scale: 1/8" = 1'-0"



1 FRONT ELEVATION
Scale: 1/8" = 1'-0"

